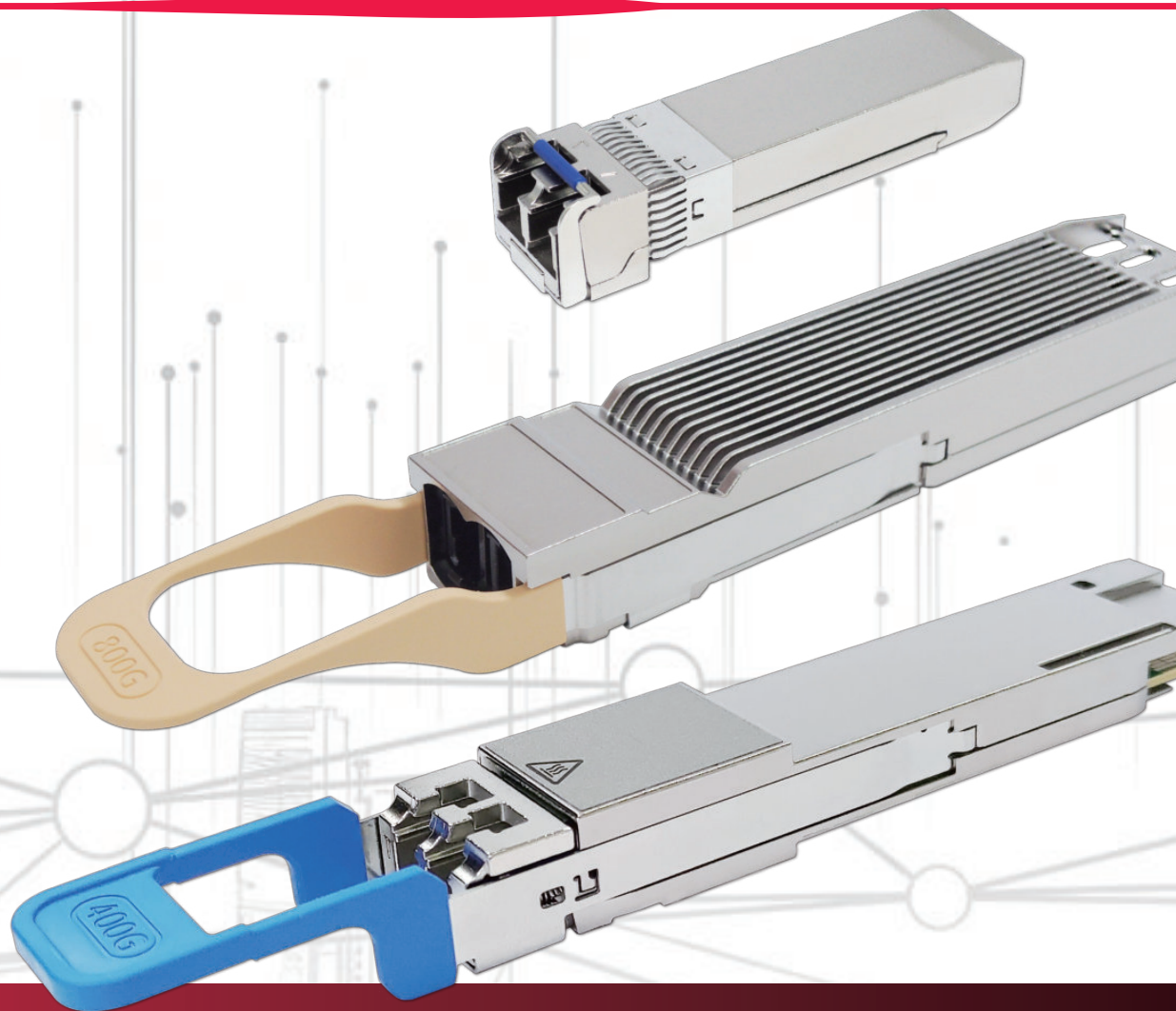




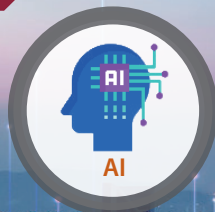
Professional Fiber Optical Products Supplier from **Taiwan**

台湾のプロフェッショナル光ファイバー製品サプライヤー



- > Fiber Optical Transceiver
- > OTN DWDM System
- > DAC, AOC, Cable, Patch-cord
- > Component

About Us



Ficer Technology Co., Ltd. established in 2005, is a professional Fiber Optical product and solution supplier in Taipei, Taiwan.

Our comprehensive product lines include :

1. Transceiver : Fiber Optical Transceiver modules with DC ~ 800Gbps data rate.
2. Equipment : OTN DWDM Transmission Platform.
3. Cable : DAC, AOC, MPO, Fiber cable/Patch-cord for various applications.
4. Component : Active and Passive fiber optical modules and components.

We devote ourselves to the value of Professional, Prompt and Secure to support our customers succeed in Fiber Optical business.

弊社は、2005年に台湾で設立された、光通信製品とソリューションのサプライヤーです。

代表的な製品：

- (1)光トランシーバー: DC ~ 800G光トランシーバーモジュール
- (2)設備: OTN DWDM 伝送プラットフォーム
- (3)ケーブル: DAC, AOC, MPO光ケーブル/パッチコード
- (4)光部品: アクティブとパッシブ光ファイバーコンポーネント

「プロフェッショナル、迅速と安心」を目指しながら全世界のお客様と共に歩んでまいりました。いつもお客様の立場から考え、光製品システムに貢献できるカスタマイズした製品により課題の解決をご提案したいと思っております。



Fiber Optical Network Application



Our Mission

To provide **Professional**, **Prompt**, and **Secure** fiber optic products that support global customers build secure and dependable fiber optic networks.

Certification



Safety



CE



FCC



TUV



UL



Company



ISO 14001



ISO 9001



D-U-N-S® Registered™



Green

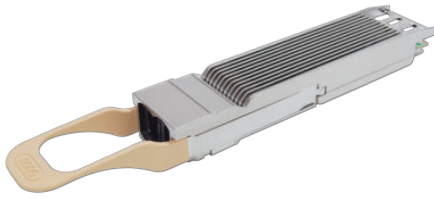


REACH



RoHS

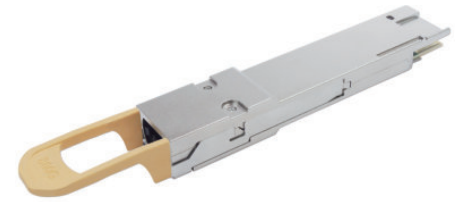
Fiber Optical Transceiver



800G OSFP112-2xVR4



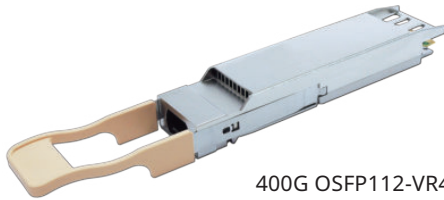
800G OSFP112-2xVR4 (Flat/RHS Type)



800G QSFP112-DD-VR8

800G OSFP112 & QSFP112-DD Series

Product Name	Data Rate	Wavelength	Connector	Distance
OSFP112-2xVR4/SR4	800G	850nm	2xMPO-12	MMF OM4 50m / OM4 100m
OSFP112-2xDR4/DR4+	800G	1310nm	2xMPO-12	SMF 500m / 2km
QSFP112-DD-VR8/SR8	800G	850nm	MPO-16	MMF OM4 50m / OM4 100m
QSFP112-DD-DR8	800G	1310nm	MPO-16	SMF 500m



400G OSFP112-VR4



400G QSFP112-DR4



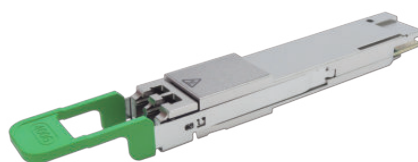
400G QSFP112-FR4

400G OSFP112 & QSFP112 Series

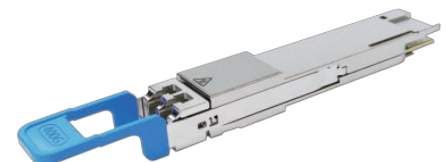
Product Name	Data Rate	Wavelength	Connector	Distance
OSFP112-VR4/SR4	400G	850nm	MPO-12	MMF OM4 50m / OM4 100m
OSFP56-SR8	400G	850nm	MPO-16	MMF OM4 100m
QSFP112-SR4	400G	850nm	MPO-12	MMF OM4 100m
QSFP112-DR4	400G	1310nm	MPO-12	SMF 500m
QSFP112-FR4	400G	CWDM	Duplex LC	SMF 2km



400G QSFP56-DD-SR8



400G QSFP56-DD-FR4



400G QSFP56-DD-LR4

400G QSFP56-DD Series

Product Name	Data Rate	Wavelength	Connector	Distance
QSFP56-DD-SR8	400G	850nm	MPO-16	MMF OM3 70m / OM4 100m
QSFP56-DD-SR4.2-BiDi	400G	850 / 908nm	MPO-12	MMF OM4 100m / OM5 150m
QSFP56-DD-DR4/DR4+	400G	1310nm	MPO-12	SMF 500m / 2km
QSFP56-DD-4x100G-LR	400G	1310nm	MPO-12	SMF 10km
QSFP56-DD-FR4	400G	CWDM	Duplex LC	SMF 2km
QSFP56-DD-LR4	400G	CWDM	Duplex LC	SMF 10km
QSFP56-DD-ER4L	400G	LWDM	Duplex LC	SMF 30km
QSFP56-DD-ER4	400G	LWDM	Duplex LC	SMF 40km
QSFP56-DD-ZR/ZR+ DCO	400G	DWDM Coherent	Duplex LC	NDSF 120km / NDSF 500km

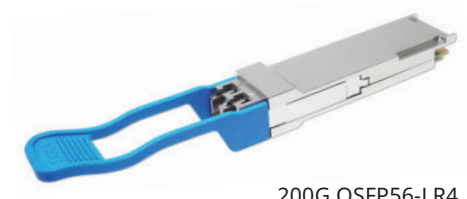
Fiber Optical Transceiver



200G QSFP28-DD-SR8



200G QSFP56-SR4



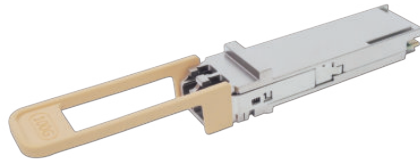
200G QSFP56-LR4

200G QSFP28-DD & QSFP56 Series

Product Name	Data Rate	Wavelength	Connector	Distance
QSFP28-DD-SR8	200G	850nm	MPO-16	MMF OM3 70m / OM4 100m
QSFP56-SR4	200G	850nm	MPO-12	MMF OM3 70m / OM4 100m
QSFP56-FR4	200G	CWDM	Duplex LC	SMF 2km
QSFP56-LR4	200G	LWDM	Duplex LC	SMF 10km



100G QSFP28-SR4/eSR4



100G QSFP28-SR1.2



100G QSFP28-SWDM4

100G QSFP28 Series

Product Name	Data Rate	Wavelength	Connector	Distance
QSFP28-SR4/eSR4 *	100G	850nm	MPO-12	MMF OM4 100m / OM4 300m
QSFP28-SR1.2	100G	850 / 908nm	Duplex BiDi LC	MMF OM4 100m / OM5 150m
QSFP28-SRBD	100G	850 / 908nm	Duplex BiDi LC	MMF OM3 70m / OM4 100m / OM5 150m
QSFP28-SWDM4	100G	SWDM	Duplex LC	MMF OM4 100m / OM5 150m
QSFP28-PSM4/ePSM4 *	100G	1310nm	MPO-12	SMF 2km / 10km
QSFP28-CWDM4/eCWDM4 *	100G	CWDM	Duplex LC	SMF 2km / 10km
QSFP28-LX4 *	100G	CWDM	Duplex LC	MMF OM3 100m / OM4 150m / SMF 2km



100G QSFP28-LR4/LR4-20



100G QSFP28-ZR4



100G QSFP28-BIDI-10/20/30/40/80

100G QSFP28 Series

Product Name	Data Rate	Wavelength	Connector	Distance
QSFP28-LR4/LR4-20 *	100G	LWDM	Duplex LC	SMF 10km / 20km
QSFP28-ER4 *	100G	LWDM	Duplex LC	SMF 40km
QSFP28-ZR4/ZR4-100 *	100G	LWDM	Duplex LC	SMF 80km / 100km
QSFP28-DR1/FR1/LR1/ERL1/ER1	100G	1310nm	Duplex LC	SMF 500m / 2km / 10km / 30km / 40km
QSFP28-BIDI-4WDM-20	100G	LWDM	BiDi LC	SMF 20km
QSFP28-BIDI-10/20/30/40	100G	Single Lambda	BiDi LC	SMF 10km / 20km / 30km / 40km
QSFP28-BIDI-80	100G	LWDM	BiDi LC	SMF 80km
QSFP28-DWDM	100G	C-Band DWDM	Duplex LC	SMF 80km (with OA and DCM)
QSFP28-DWDM2	100G	C-Band DWDM	Dual CS	SMF 80km (with OA and DCM)

* Indicates Industrial Grade (I-Temp) Available.

Fiber Optical Transceiver



100G ~ 40G QSFP / SFP Adapter Series

Product Name	Data Rate
QSFP+/SFP+ Adapter *	40G / 10G
QSFP28/SFP28 Adapter *	100G / 25G



400G ~ 10G Loopback Series

Product Name	Data Rate
SFP+/SFP28 Loopback	10G / 25G
QSFP+/QSFP28 Loopback	40G / 100G
QSFP56 Loopback	200G
QSFP-DD Loopback	400G
OSFP Loopback	400G / 800G



50G SFP56-SR/LR



50G SFP56-BX10

50G SFP56 Series

Product Name	Data Rate	Wavelength	Connector	Distance
SFP56-SR	50G	850nm	Duplex LC	MMF OM4 100m
SFP56-LR	50G	1310nm	Duplex LC	SMF 10km
SFP56-BX10	50G	1310nm	BiDi LC	SMF 10km



40G QSFP+ SR4/eSR4



40G QSFP+ SRBD



40G QSFP+ IR4/LR4

40G QSFP+ Series

Product Name	Data Rate	Wavelength	Connector	Distance
QSFP+ SR4/eSR4 *	40G	850nm	MPO-12	MMF OM3 100m ~300m / OM4 150m ~400m
QSFP+ SRBD	40G	850 / 908nm	Duplex BiDi LC	MMF OM3 100m / OM4 150m
QSFP+ SWDM4	40G	SWDM	Duplex BiDi LC	MMF OM3 240m / OM4 350m
QSFP+ LX4/LM4 *	40G	CWDM	Duplex LC	MMF OM3 150m / SMF 2km
QSFP+ PSM4 IR/LR *	40G	1310nm	MPO-12	SMF 2km / SMF 10km
QSFP+ IR4/LR4 *	40G	CWDM	Duplex LC	SMF 2km / SMF 10km
QSFP+ ER4 *	40G	CWDM	Duplex LC	SMF 40km
QSFP+ ZR4 *	40G	LWDM	Duplex LC	SMF 80km

* Indicates Industrial Grade (I-Temp) Available.

Fiber Optical Transceiver



25G SFP28-SR/LR



25G SFP28-BIDI



25G SFP28-CWDM

32G/25G SFP28 Series

Product Name	Data Rate	Wavelength	Connector	Distance
SFP28-32GFC-SW *	28G	850nm	Duplex LC	MMF OM3 70m / OM4 100m
SFP28-32GFC-LW *	28G	1310nm	Duplex LC	SMF 10km
SFP28-SR *	25G	850nm	Duplex LC	MMF OM3 70m / OM4 100m
SFP28-eSR *	25G	850nm	Duplex LC	MMF OM3 200m / OM4 300m
SFP28-LRL *	25G	1310nm	Duplex LC	SMF 2km
SFP28-LR/LR20 *	25G	1310nm	Duplex LC	SMF 10km / 20km
SFP28-ER *	25G	LWDM	Duplex LC	SMF 40km
SFP28-ZR	25G	LWDM	Duplex LC	SMF 80km
SFP28-BX10/20/40 *	25G	1270nm / 1330nm	BiDi LC	SMF 10km / 20km / 40km
SFP28-BX60/80	25G	1295nm / 1309nm	BiDi LC	SMF 60km / 80km
SFP28-CWDM *	25G	CWDM	Duplex LC	SMF 10km
SFP28-DWDM *	25G	DWDM	Duplex LC	SMF 10km
SFP28-DWDM-Tunable *	25G	DWDM 50GHz	Duplex LC	SMF 10km



10G SFP+ SR/LR/ER/ZR



10G SFP+ BIDI



10G SFP+ CWDM

16G/10G SFP+ Series

Product Name	Data Rate	Wavelength	Connector	Distance
SFP+ 16GFC-SW *	14G	850nm	Duplex LC	MMF OM3 100m
SFP+ 16GFC-LW *	14G	1310nm	Duplex LC	SMF 10km
SFP+ SR *	10G	850nm	Duplex LC	MMF OM3 300m / OM4 400m
SFP+ LRM *	10G	1310nm	Duplex LC	MMF 220m
SFP+ LRL *	10G	1310nm	Duplex LC	SMF 2km
SFP+ LR/LR20 *	10G	1310nm	Duplex LC	SMF 10km / 20km
SFP+ ER1310-40/60 *	10G	1310nm	Duplex LC	SMF 40km / 60km
SFP+ ER-40/60 *	10G	1550nm	Duplex LC	SMF 40km / 60km
SFP+ ZR/ZR100/EZR *	10G	1550nm	Duplex LC	SMF 80km / 100km / 120km
SFP+ BX10/20/40/60 *	10G	1270nm / 1330nm	BiDi LC	SMF 10km / 20km / 40km / 60km
SFP+ BX80/100 *	10G	1490nm / 1550nm	BiDi LC	SMF 80km / 100km
SFP+ CWDM *	10G	CWDM	Duplex LC	SMF 5km ~ 100km
SFP+ DWDM *	10G	DWDM	Duplex LC	SMF 40km ~ 100km
SFP+ DWDM-Tunable *	10G	DWDM 50GHz	Duplex LC	SMF 80km

* Indicates Industrial Grade (I-Temp) Available.

Fiber Optical Transceiver



10G XFP-SR/LR/ER/ZR



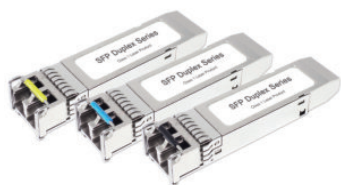
10G XFP-BX



10G XFP-CWDM/DWDM

10G XFP Series

Product Name	Data Rate	Wavelength	Connector	Distance
XFP-SR/LR/LR20 *	10G	850nm / 1310nm	Duplex LC	MMF OM3 100m / SMF 10km / 20km
XFP-ER/ZR/ZR100/EZR *	10G	1550nm	Duplex LC	SMF 40km / 80km / 100km / 120km
XFP-BX20/40/60 *	10G	1270nm / 1330nm	BiDi LC	SMF 20km / 40km / 60km
XFP-BX80/100 *	10G	1490nm / 1550nm	BiDi LC	SMF 80km / 100km
XFP-CWDM *	10G	CWDM	Duplex LC	SMF 5km ~ 100km
XFP-DWDM *	10G	DWDM	Duplex LC	SMF 40km ~ 100km
XFP-DWDM-Tunable *	10G	DWDM 50GHz	Duplex LC	SMF 80km



2.5~1.25G SFP-Duplex LC



2.5G~1.25G SFP-BX



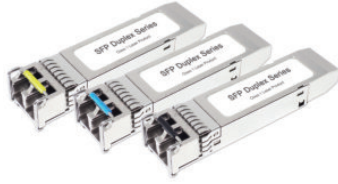
2.5G~1.25G SFP-CWDM

2.5G~1.25G SFP Series

Product Name	Data Rate	Wavelength	Connector	Distance
SFP-OC48 *	2.5G	850nm / 1310nm / 1550nm	Duplex LC	MMF 300m / SMF 2km ~ 140km
SFP-OC48-BX *	2.5G	1310nm / 1490nm / 1550nm	BiDi LC / SC	SMF 20km / 40km / 60km / 80km
SFP-OC48-CWDM *	2.5G	CWDM	Duplex LC	SMF 40km / 80km / 100km
SFP-OC48-DWDM *	2.5G	DWDM	Duplex LC	SMF 40km / 80km / 120km
SFP-1000SX/SX2 *	1.25G	850nm / 1310nm	Duplex LC	MMF 550m / 2km
SFP-1000LX/LX20/ELX30 *	1.25G	1310nm	Duplex LC	SMF 10km / 20km / 30km
SFP-1000LHX/LHX60 *	1.25G	1310nm	Duplex LC	SMF 40km / 60km
SFP-1000XD *	1.25G	1550nm	Duplex LC	SMF 50km / 60km
SFP-1000ZX *	1.25G	1550nm	Duplex LC	SMF 80km
SFP-1000EZ *	1.25G	1550nm	Duplex LC	SMF 120km ~ 160km
SFP-1000BX *	1.25G	1310nm / 1490nm / 1550nm	BiDi LC / SC	MMF 500m / SMF 2km ~ 80km
		1510nm / 1590nm		SMF 100km ~ 120km
SFP-1000-CWDM *	1.25G	CWDM	Duplex LC	40km ~ 120km
SFP-1000-DWDM *	1.25G	DWDM	Duplex LC	40km ~ 120km

* Indicates Industrial Grade (I-Temp) Available.

Fiber Optical Transceiver



622M~125M SFP-Duplex LC



622M~125M SFP-BX



622M~125M SFP-CWDM

622M~DC SFP Series

Product Name	Data Rate	Wavelength	Connector	Distance
SFP-OC12 *	622M	850nm / 1310nm / 1550nm	Duplex LC	MMF 550m / SMF 2km~140km
SFP-OC12-BX *	622M	1310nm / 1490nm / 1550nm	Duplex LC	SMF 20km / 40km / 60km / 80km
SFP-OC12-CWDM *	622M	CWDM	Duplex LC	SMF 40km / 80km / 100km
SFP-100SX/FX *	125 / 155M	850nm / 1310nm	Duplex LC	MMF 2km ~ 5km
SFP-100LX *	125 / 155M	1310nm	Duplex LC	SMF 10km ~ 30km
SFP-100EX *	125 / 155M	1310nm	Duplex LC	SMF 40km ~ 60km
SFP-100ZX *	125 / 155M	1550nm	Duplex LC	SMF 80km ~ 100km
SFP-100EZX *	125 / 155M	1550nm	Duplex LC	SMF 120km ~ 220km
SFP-100BX *	125 / 155M	1310nm / 1490nm / 1550nm	BiDi LC / SC	MMF 2km / SMF 20km ~ 120km
SFP-100-CWDM *	125 / 155M	CWDM	Duplex LC	SMF 80km ~ 140km
SFP-100-DWDM *	125 / 155M	DWDM	Duplex LC	SMF 80km ~ 200km
SFP Ultra Low Speed *	DC ~ 12M	850nm / 1310nm	Duplex LC	MMF 2km ~ 5km / SMF 20km ~ 40km



CSFP+ 2CH 10G-BX-U/D



CSFP 2CH 1000BX-U



CSFP 2CH 1000BX-D

10G/1.25G CSFP+ / CSFP Series

Product Name	Data Rate	Wavelength	Connector	Distance
CSFP+ 10G-BX *	10G	1270nm / 1330nm	Duplex BiDi LC	SMF 10km / 20km
CSFP-1000BX *	1.25G	1310nm / 1490nm / 1550nm	Duplex BiDi LC	SMF 10km / 20km



SFP-GE-100FX/LX-SGMII



SFP-GE-100BX-UNIV

1.25G/125M 100FX/LX SFP for GE slot Series

Product Name	Data Rate	Wavelength	Connector	Distance
SFP-GE-100FX/LX-SGMII *	125M	1310nm	Duplex LC	MMF 2km / SMF 10km / 20km
SFP-GE-100BX-SGMII *	125M	1310nm	BiDi LC	SMF 10km / 20km
SFP-GE-100FX/LX-UNIV *	125M	1310nm	Duplex LC	MMF 2km / SMF 10km / 20km
SFP-GE-100BX-UNIV *	125M	1310nm	BiDi LC	SMF 10km / 20km

* Indicates Industrial Grade (I-Temp) Available.

Fiber Optical Transceiver



XG/XGSPON SFP+ OLT



EPON/GPON SFP OLT



EPON/GPON SFP Stick ONT

10G~1.25G PON SFP+ / SFP Series

Product Name	Data Rate	Wavelength	Connector	Distance
XG/XGSPON SFP+ OLT	10G	Tx 1577nm / Rx 1270nm	BiDi SC	SMF 20km
EPON SFP+ OLT *	10G	Tx 1577nm / Rx 1270nm	BiDi SC	SMF 20km
GPON SFP OLT *	2.5G	Tx 1490nm / Rx 1310nm	BiDi SC	SMF 20km
GPON SFP Stick ONT *	2.5G	Tx 1310nm / Rx 1490nm	BiDi SC	SMF 20km
EPON SFP OLT *	1.25G	Tx 1490nm / Rx 1310nm	BiDi SC	SMF 20km



10G SFP+ RJ45 Copper



1G SFP RJ45 Copper



100M SFP RJ45 Copper

10G~100M RJ45 Copper Series

Product Name	Data Rate	Connector	Line Port Speed (RJ45) / Distance
SFP-10GB-T 80m/100m	10G	Copper RJ45	10GBASE-T 80m / 100m
SFP-10GB-T 30m *	1 / 2.5 / 5 / 10G	Copper RJ45	10GBASE -T 30m / 5GBASE -T 50m 2.5GBASE -T 50m / 1000BASE -T 100m
SFP-2500T *	2.5G	Copper RJ45	2.5GBASE-T 100m
SFP-1000T *	1000M	Copper RJ45	1000BASE-T 100m
SFP-1000T-UNIV *	10 / 100 / 1000M	Copper RJ45	10 / 100 / 1000BASE-T 100m
SFP-10/100/1000-SGMII *	10 / 100 / 1000M	Copper RJ45	10 / 100 / 1000BASE-T 100m
SFP-100TX *	10 / 100M	Copper RJ45	10 / 100BASE-TX 100m



1X9 DUAL SC



1X9 BIDI SC



DC~10G SFF/mini-SFF

10G~DC 1X9 / 2X5 / mini-SFF Series

Product Name	Data Rate	Wavelength	Connector	Distance
1X9 DUAL *	155M / 1.25G	850nm / 1310nm / 1550nm	Duplex SC / FC / ST	MMF 550m ~ 2km / SMF 20km ~120km
1X9 BX *	155M / 1.25G	1310nm / 1490nm / 1550nm	BiDi SC / FC / ST	MMF 550m ~ 2km / SMF 20km ~120km
1X9 Ultra-Low Speed *	DC ~ 12M	850nm / 1310nm	Duplex SC / FC / ST	MMF 2km ~ 5km / SMF 20km ~ 40km
2X5 DUAL *	155M / 1.25G	850nm / 1310nm / 1550nm	Duplex LC	MMF 550m / SMF 10km ~ 80km
2X5 BX *	155M / 1.25G	1310nm / 1490nm / 1550nm	BiDi LC / SC	MMF 550m / SMF 10km ~ 20km
1X10 mini-SFF *	DC ~ 10G	850nm / 1310nm	Duplex LC	MMF 550m / SMF 10km ~ 20km

* Indicates Industrial Grade (I-Temp) Available.

DCO & DWDM Tunable



400G QSFP56-DD-ZR/ZR+ DCO



400G/200G/100G CFP2-DCO



100G QSFP28-ZR DCO

400G/200G/100G DCO (Digital Coherent Optics) Series

Product Name	Data Rate	Wavelength	Connector	Distance
QSFP56-DD-ZR/ZR+ DCO	400G	DWDM Coherent	Duplex LC	NDSF 120km / NDSF 500km
CFP2-DCO	400G / 200G / 100G	DWDM Coherent	Duplex LC	NDSF 500~2000km
CFP-DCO	100G	DWDM Coherent	Duplex LC	NDSF 1200km
QSFP28-ZR DCO	100G	DWDM Coherent	Duplex LC	NDSF 120km



25G SFP28-DWDM-Tunable



10G SFP+ DWDM-Tunable

25G~10G SFP28 / SFP+ DWDM Tunable Series

Product Name	Data Rate	Wavelength	Connector	Distance
SFP28-DWDM-Tunable *	25G	DWDM 50GHz	Duplex LC	SMF 10km
SFP+ DWDM-Tunable *	10G	DWDM 50GHz	Duplex LC	SMF 80km

Discrete Module



Fiber Pigtail Coupled LD / PD module

Features

- Data Rate 125M / 155M / 1.25G / 2.5G / 4.25G
- Transmitter Laser Diode: 850nm VCSEL / 1310nm FP / 1310nm DFB / 1550nm DFB
- Receiver Photo Diode: PIN / APD
- SC, FC, ST, LC, SMA or customized optical connector
- SM / OM1 / OM2 / OM3 / OM4 fiber pigtail with customized length



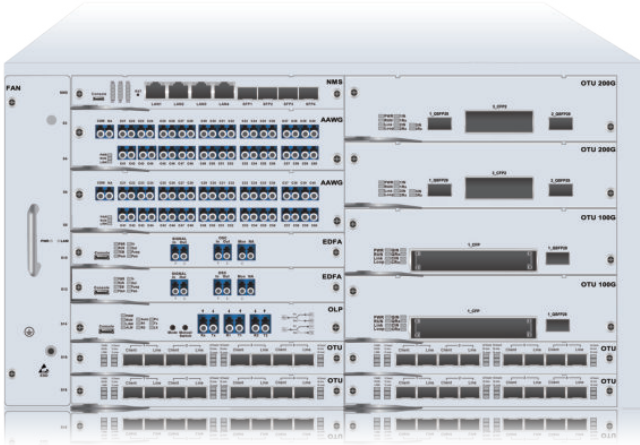
Receptacle LD / PD module

Features

- Data Rate 125M / 155M / 1.25G / 2.5G / 4.25G
- Transmitter Laser Diode: 850nm VCSEL / 1310nm FP / 1310nm DFB / 1550nm DFB
- Receiver Photo Diode: PIN / APD
- SC, FC, ST, LC, SMA or customized Receptacle connector
- SM / OM1 / OM2 / OM3 / OM4 fiber

* Indicates Industrial Grade (I-Temp) Available.

OTN DWDM System



5U 20-Slot Chassis

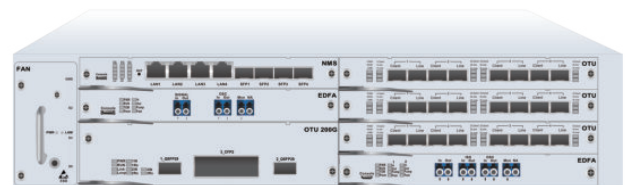
F520 Series

*High Capacity / High Density /
High Flexibility*

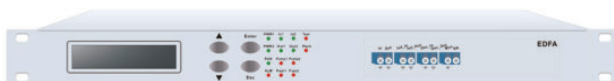
- 1U, 2U, 5U Platform Chassis, 1U Standalone Chassis
- Support Red / Blue port for single-fiber DWDM transmission
- Optional OSC management channel for remote management
- Own monitoring port, real-time monitoring optical power and OSNR
- Support 400G / 200G / 100G DCO modules
- Hot Pluggable, Easy Replacement
- 1+1 Balanced and Redundancy Power supply, AC / DC / Combo optional
- Support SNMP-based Network management
- Support CLI, WEB, Telnet and NMS
- Visual Graphic information interface
- Support 4, 8, 20 slots chassis for different capacity requirement
- Country, Province, State, City backbone and metro network
- Metro DWDM distance extension
- Long-Haul and high Capacity transmission



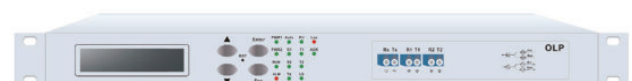
1U 4-Slot Chassis



2U 8-Slot Chassis



1U Standalone C-Band EDFA / O-Band SOA



1U Standalone OLP

OTN DWDM System



NMS



10G Transponder



100G Transponder



40G / 100G Muxponder



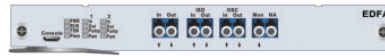
200G Muxponder



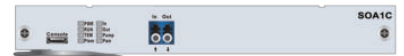
400G Muxponder



400G Transponder



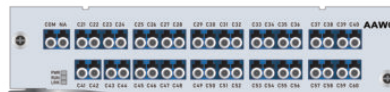
EDFA / EDFA R/B / EDFA 2-Stage



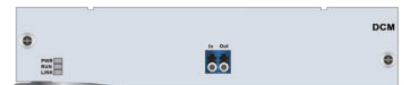
SOA



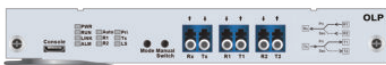
DWDM Mux-Demux / OADM



AAWG



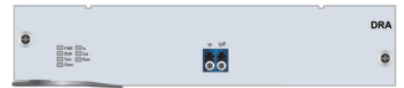
DCM



OLP



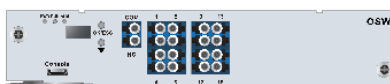
OCP



DRA



OPM



OSW



OTDR

DAC, AOC, Cable, Patch-cord



DAC (Direct-Attach Cable)



AOC (Active Optical Cable)



AEC (Active Electrical Cable)

100G~10G / DAC, AOC, AEC Series

Product Name	Data Rate	Form Factor
DAC (Direct-Attach Cable)	10G / 25G / 40G / 56G /	SFP+ / SFP28 / QSFP+ / SFP56
	100G / 200G / 400G	QSFP28 / QSFP56 / QSFP56-DD / QSFP112
AOC (Active Optical Cable)	10G / 25G / 40G / 56G /	SFP+ / SFP28 / QSFP+ / SFP56
	100G / 200G / 400G	QSFP28 / QSFP56 / QSFP56-DD / QSFP112
AEC (Active Electrical Cable)	800G / 400G	OSFP / QSFP56-DD / QSFP112



MPO Patch-cord (Indoor)

Features

- 8, 12, 16, 24 Fiber count available
- High Density & Compact Size
- Compliant with IEC61754-7, TIA/EIA 604-5, GR-326, GR-1435
- LSZH, OFNR, OFNP cable jacket



General Patch-cord (Indoor)

Features

- SC, FC, ST, LC, MU, E2000, MTRJ... Connectors
- SM / OM1 / OM2 / OM3 / OM4 fiber
- Cable Diameter: Bare Fiber / 0.9 / 1.6 / 1.8 / 2.0 / 3.0mm
- Simplex / Duplex / Round Duplex
- PVC / LSZH / OFNR / OFNP cable jacket



Mini Distribution / Distribution / Breakout / Bundle Cable (Indoor)

Features

- 4~128 or more Fiber counts available
- SM / OM1 / OM2 / OM3 / OM4 fiber
- Compact Size of Cable Diameter
- PVC, LSZH, OFNR, OFNP cable jacket
- Indoor deployment



Armored Patch-cord / Armored Breakout Cable (Indoor/Outdoor)

Features

- 1~24 or more Fiber counts available
- SM / OM1 / OM2 / OM3 / OM4 fiber
- SC, FC, ST, LC, MU, E2000, MTRJ... Connectors (Outdoor)
- Steel / Aluminum tape armored inside outer PVC / LSZH / TPU jacket
- High tensile strength, pressure resistance and re-twist resistance



FTTA Waterproof Cable for Mobile Base Station (Outdoor)

Features

- 1~4 Fiber counts available
- SM / OM1 / OM2 / OM3 / OM4 fiber
- CPRI / NSN / FULLAXS / PDLC / ODVA / ODC Connector
- Steel / Aluminum tape armored available inside outer LSZH / TPU jacket
- High tensile strength, pressure resistance and re-twist resistance
- Resistance of flame and rodent biting (for armored type)



Military Tactical Waterproof Cable (Outdoor)

Features

- 1~12 or more Fiber counts available
- SM / OM1 / OM2 / OM3 / OM4 fiber
- Spiral Steel Tube inside outer TPU jacket
- IP68 Military Tactical Waterproof Connector
- High tensile strength, pressure resistance and re-twist resistance
- Resistance of flame and rodent biting
- Portable Cable Reel available
- Outdoor deployment for Military or Critical application

Passive Component & Accessory



FDB (Fiber Distribution Box)
/ ODF (Optical Distribution Frame)

Features

- 8~120 Ports with SC / FC / ST / LC / or Customized Adaptor
- Rack-Mount / Wall-Mount
- Aluminum / SPCC Plate
- Anti-Rust paint coating
- Sliding Rail / Sliding Splice Tray available
- Cabling and Fusion Pigtail, Accessories available



QAC (Quick Assembly Connector)

Features

- SC / UPC, SC / APC, FC / UPC, FC / APC, LC / UPC, LC / APC Connector
- Pre-Embedded / Fusion / Straight Through type
- SC Connector Length 50~60mm
- Optical Insertion Loss <0.3dB, Optical Return Loss >50dB
- Durability <0.2dB change after 500 times matting
- Tensile Strength >30N



PLC / FBT Splitter

Features

- Compliant with GR-1209-CORE & GR-1221-CORE
- G.657A1 / G.657A2 / G.657B2 Fiber
- 1x2 to 2x128 Configuration
- Wavelength range 1260nm ~ 1650nm / Dual Window / Triple Window / MMF
- Loss Uniformity <2.5dB, PDL <0.4dB
- Steel Tube / Metal Box / Plastic Box / LGX Box / 1U Rack packages



Attenuator

Features

- Compliant with GR-910-CORE / JIS C5920
- SM / OM1 / OM2 / OM3 / OM4 Fiber
- 0 ~ 40dB Attenuation
- Fixed or Variable Attenuation
- Male to Female / Female to Female
- UPC / APC physical contact polishing



Adaptor

Features

- SC, FC, ST, LC, MU, E2000, MPO... various type
- Simplex / Duplex / Quad
- PC / APC
- Plastic / Meta Housing
- Female to Female / Female to Male
- Big (2.5mm) to Small (1.25mm) Hybrid available
- Different Connector Hybrid available
- MAX Insertion Loss 0.2~0.5dB



CWDM MUX / DEMUX / OADM

Features

- 20nm channel spacing
- 18 Channels 1270nm ~ 1610nm
- Average Pair Loss configuration
- Low Insertion Loss & PDL
- High Isolation: Adjacent >30dB / Non-adjacent >45dB
- Monitor / Upgrade / Express port available
- Plastic Box / Metal Box / LGX Box / 1U Rack packages



DWDM MUX / DEMUX / OADM

Features

- TFF / TAWG / AAWG techniques
- 100 / 75 / 50GHz channel spacing
- MAX 96 Channels in C-Band wavelength
- Average Pair Loss configuration
- Low Insertion Loss & PDL
- High Isolation: Adjacent >25dB / Non-adjacent >30dB
- Monitor / Upgrade / Express port available
- Plastic Box / Metal Box / LGX Box / 1U Rack packages



LWDM MUX / DEMUX / OADM

Features

- 800GHz channel spacing
- 12 Channels 1269.23nm ~ 1318.35nm
- Average Pair Loss configuration
- Low Insertion Loss & PDL
- High Isolation: Adjacent >25dB / Non-adjacent >35dB
- Monitor / Upgrade / Express port available
- Plastic Box / Metal Box / LGX Box / 1U Rack packages



Fiber Clean Tools

Features

- 2.5mm Clean Pen / Stick for SC / FC / ST / E2000 Connector
- 1.25mm Clean Pen / Stick for LC, MU Connector
- MPO Cleaner for MPO Connector
- 500~800+ times use for Clean Pen
- Clean Wipe / Paper / Tape for various Fiber End Face clean

Link Fiber to Future

光で未来へ繋ぐ



FICER Technology Co., Ltd.

Tel +886-2-28983830

Fax +886-2-28983840

Email Sales@Ficer.com

Web www.Ficer.com

2F., No.138, Daye Rd., Beitou Dist.,

Taipei City 112030, Taiwan (R.O.C)

